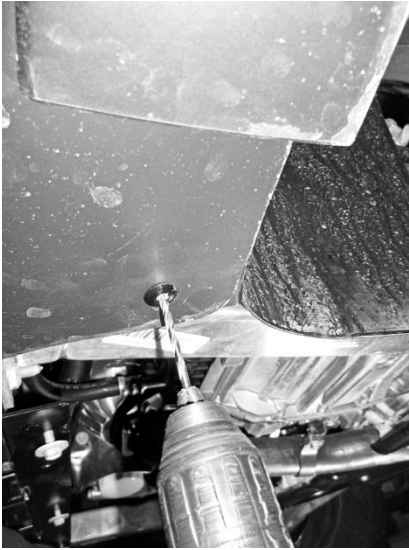


Cherokee (KL) Bumper/Winch mount



Thank you for your Rocky Road Outfitters, llc purchase! We value your business & appreciate any input you might have on this product and/or its install. Your winch mount/bumper is guaranteed to last as long as you own your vehicle. Read the instructions thoroughly before installation. If you have any questions on this or other modifications to your Cherokee, please don't hesitate to call our tech line, (435)654-1149.

Use your common sense as much as these instructions for a successful install.



Step 1.

Put the front of your vehicle on jack stands and remove front tires. Disconnect Ground on Battery.

Step 2.

On the bottom of your vehicle locate 2 pop-rivets (located on the bottom of the bumper just inside the front of the fender well), drill the rivets as shown in the picture at left.

Step 3... On the inside front of the wheel well locate the 2 bolts lower on the fenders. (2 on pass side 2 on dr side) remove>



Once those bolts are removed you can pull the plastic fender out of the way and tie it out of the way with some wire or string.

< Photo at left shows an example of the fender liner pulled back out of the way.



Step 4.>

On the inside of the fender well locate the WHITE push pins that hold the fender flare on. With a flat nose screw driver press the tabs down and push them out. There are

10 clips on each side located along the fender. Once you have all those out you can remove the fender flare.





Step 5.

On the front of your vehicle locate the black plastic push pins that hold the plastic shield covering the radiator mount. First pull the push-pin out (as illustrated in the photo at left).



Then remove the remaining plastic pin-base as shown in the photo at right. Remove with caution as you will be reusing them. There are 12 in all.



Remove the radiator cover carefully and set aside.



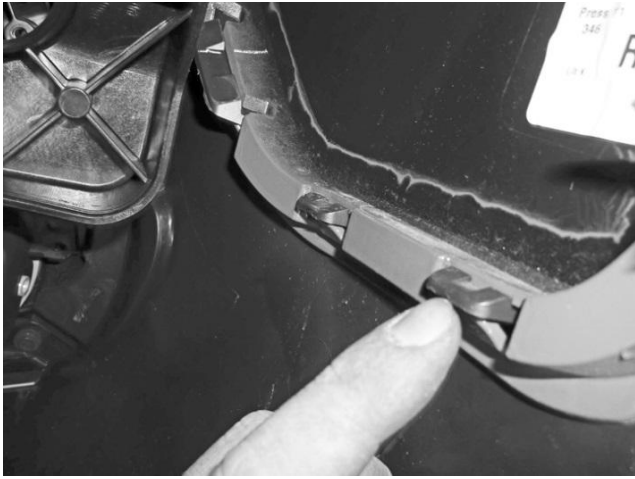
Step 6.

Remove the bolts holding the fender to the support. Photo shows an open hole where one bolt has been removed, socket wrench is on another bolt, removing it.



Inside the fender well locate the bolt holding the lower bumper fascia to the upper bumper. Remove it, on each side of the vehicle.

You will also need to remove the bolts underneath the front, visible if you lay under the vehicle. If you have a skidplate, you will need to loosen the forward bolts on that in order to remove a couple of the 10mm head bolts from the plastic bumper underneath.



Step 7.

Now the tricky part.

Looking on the inside of the fender well, you will notice the fascia and the bumper are held together with clips as shown in the photo at left

From the outside of the bumper carefully press a flat wide screwdriver between the bumper and fascia while pulling slightly on the bumper till it pops out. Do this along the center section, but prying the tabs from the inside by the radiator instead.

Do this all along the bumper on both sides till it is just hanging there.



Step 8.

Remove plastic screw that the hood rests on. note the depth, you will want to set it at the same position during reassembly.

Step 9.

Inside the fender well on the Drivers side locate the connector/harness for the fog lights. Disconnect this and any other similar connectors you may have to the bumper.

Now Carefully remove the plastic front bumper fascia. It will take some pulling and prying, don't expect this to be super easy... The plastic cross-piece which holds the fog light wiring will have hidden built-in plastic clips holding the bumper to it. Use a short flat screwdriver to pry and release each of these snaps, from underneath the strip, by prying from the radiator side as you pull the large bumper plastic off from the side.

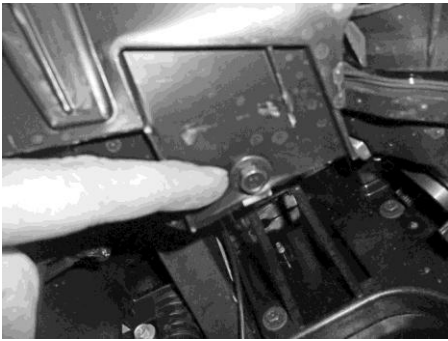


< Step 10.

Remove the 2 bolts(16 mm) holding the tow hook on.(both sides) You will not be able to remove the tow hooks all the way and you wont need to.

If your vehicle does not have the Tow Hooks mounted, you will need to purchase the kit. Hopefully you found this out on our website before proceeding this far.

Rocky Road does sell tow hook kits at prices lower than your Jeep dealership. In a pinch though, you should be able to pick a kit up at your local Jeep dealer quickly.



Step 11.

The plastic on the crosspiece that has the wiring for the fog lights attached to it. Remove the 2 bolts holding that plastic piece to the grille support. (1 bolt on each side) which have 10mm heads and are somewhat hidden under the headlights, toward the middle of the vehicle.

Step 12.

Locate and remove the 4 bolts and 2 nuts holding the bumper crossmember to the vehicle (each side). Photo shows the left finger pointing at the small nut, right finger at bolt.

Be careful when pulling the crossmember off as to not damage any of the transmission lines or a/c lines.

Remove the stock crossmember and install your new crossmember/winch mount.

6cyl owners, be careful of your transmission line on the right side which needs to fit inside of a cut-out pocket in the winch mount. The holes for the small locating bolts are oddly shaped which is to help with the fitment since you will likely have to push-pull-knock-kick the mount into place to get it tight. Reuse the factory bolts and small nuts to firmly attach the new crossmember/mount to your Jeep.



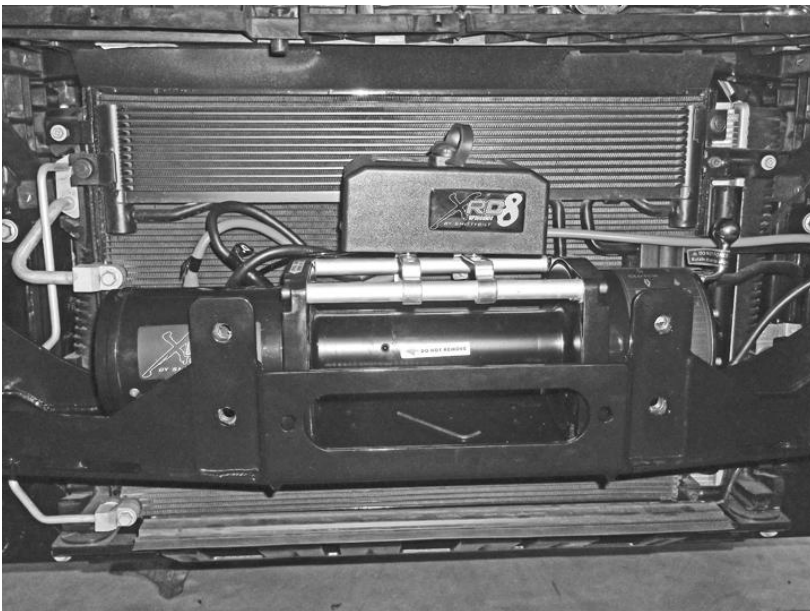
Step 13.

Your winch mount is the new bumper crossmember.

With the winch mount installed, you can now install your winch using the holes provided and with the supplied hardware in your winch kit. Don't forget the square nuts with your winch in each of the mounting feet.

Tip for 6cyl owners, Unbolt the horn brackets, for more clearance, slide your winch in from the left, angling down and right. The fit is too tight to simply drop into place. We also recommend using some tape across the square nuts to hold them in place since you will need to tilt and angle your winch to fit it in.

Route your wires in a good spot that doesn't have a chance to get damaged.



Note: The photo above-left shows the Smittybilt winch which can only be used with the 4cyl engine. 6cyl engine must use our Warn 8k winches. The winch itself mounts the same, but the control box on the 6cyl must be mounted outside (covered later in instructions).

Mount the tow hooks in place with the provided 3/8" hardware. It should fit snug in place. Photo shows passenger's side tow hook and new crossmember in place



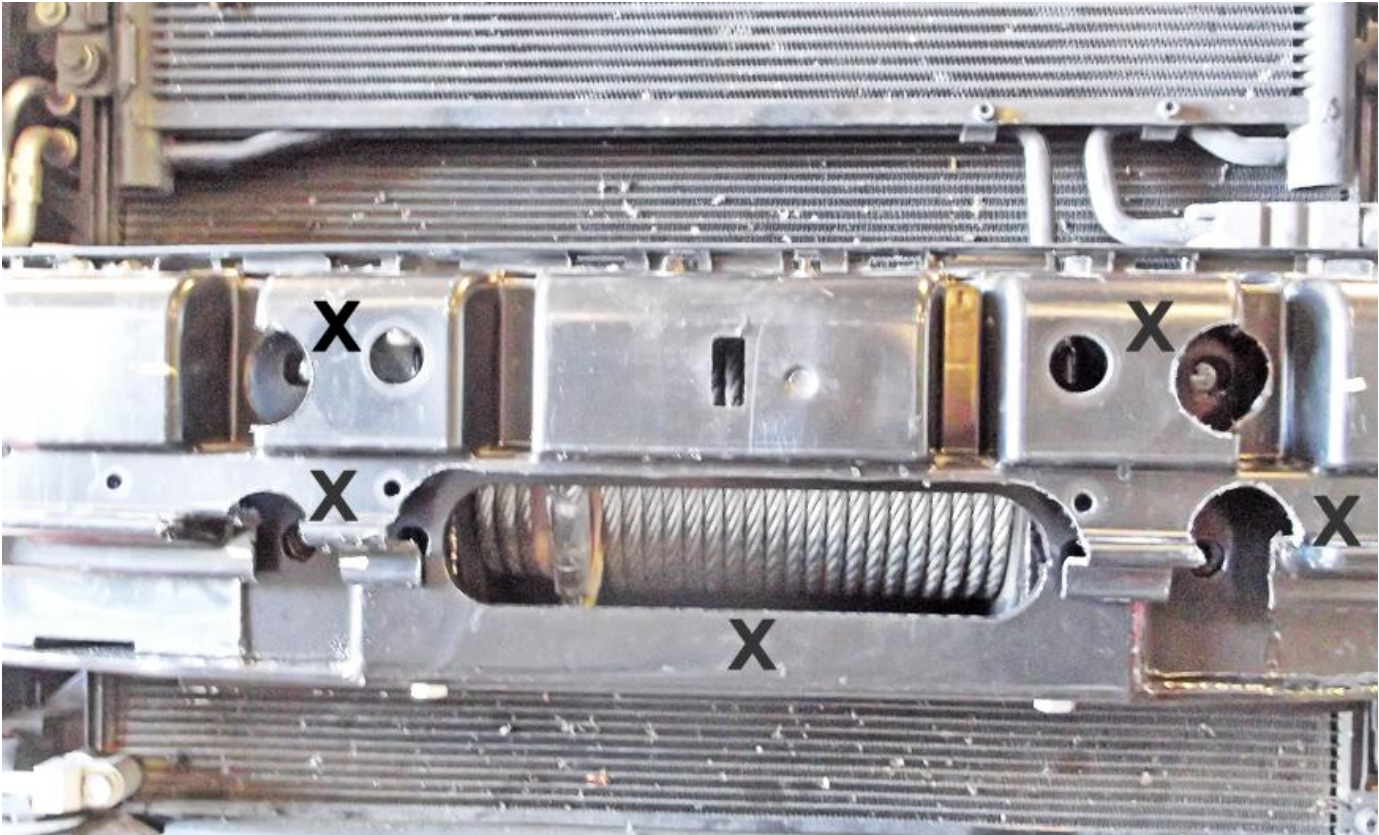
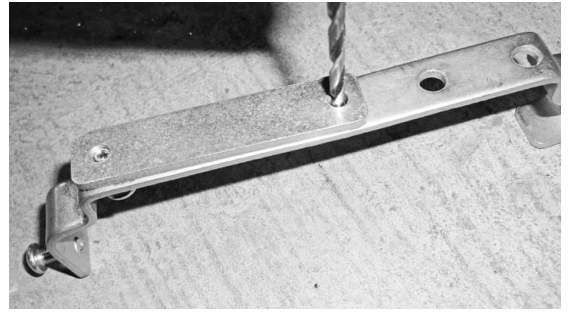
>

Step 14-(for 4cyl Jeep only):

To mount the control box for the winch you will have to drill a new hole in the box mounting bracket. Refer to picture.

Place screw in one end of brackets as shown to locate drilling point. Use small drill to start the hole, then step up in size to enlarge the hole to same size as adjacent hole as you can see in the photo.

See photo on previous page for a properly mounted control box position on the 4cyl Jeep.



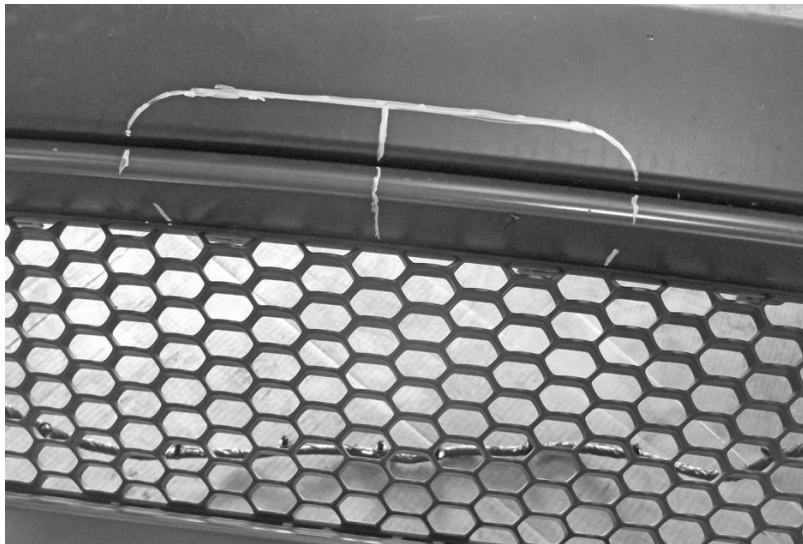
Step 15.

Place the plastic cross-piece which is the support structure for the fog light wiring on the vehicle place and mark to cut for clearance of mounting points.

Our photo shows X's on the 4 points of cutting. We use a 1.75-2" Holesaw for each of the 4 round holes you see. And each end of the winch cable opening. This piece is covered by the bumper, so it doesn't need to be perfect.

Lower holes are easy to mark if you place this piece into position and mark the location of the visible holes. Upper holes, mark them directly above the lower holes, but centered at 1 3/8" below the top of the cross-piece. Its OK if you're off a bit, this piece is covered. But you do need to slip the 1" spacer tubes (later step) over those holes, centered, to complete the installation.

Place bumper fascia back into position and mark the inside of the bumper with a marker, or sharp tool, so you can drill the holes for the fairlead mount.



STEP 16.

Find the middle of the bumper. We do this by using the honeycomb underneath the bumper. Just count your way in to the middle from each edge. Once you have found the middle, make a Center mark above the honeycomb.

The Oval you need to cut for the winch opening is 9" across. Measure 4.5" to either side of your Center mark and make another mark. That will be the OUTSIDE EDGE of your holesaw cut.

Now from the large seam which is the joint between the two smooth plastic surfaces, mark a line 1" above that seam. That is your upper cut line.

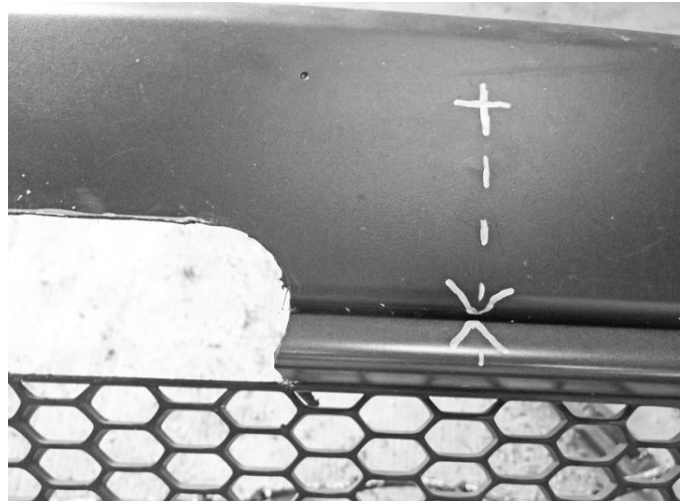
Use a 1.75-2" Holesaw on each end of the oval and using your top line as a guide as

well. You will intersect the thick lower plastic portion, so be ready for that as you push the holesaw thru. Keep in mind this will all be covered up by the new bumper. With the end holes cut, use a cutting wheel or hacksaw blade along the top line. Then do the same along the bottom line which is right at the top of the honeycomb structure. Remove all of these cut pieces. You can clean up the cuts with sandpaper or a utility knife if you like. Again, it will all be covered by the new bumper.

Now to cut the holes for the spacer tubes. Find the center again using the honeycomb structure. Measure 7" out on each side, make a vertical mark.

The first hole is centered on the seam and your mark, referenced in the photo by the X. Second hole is 2.75" above that point, referenced by the + .

Use a 1.25-1.5" Holesaw to cut these holes on each side of the new oval hole you have cut, 4 holes total.

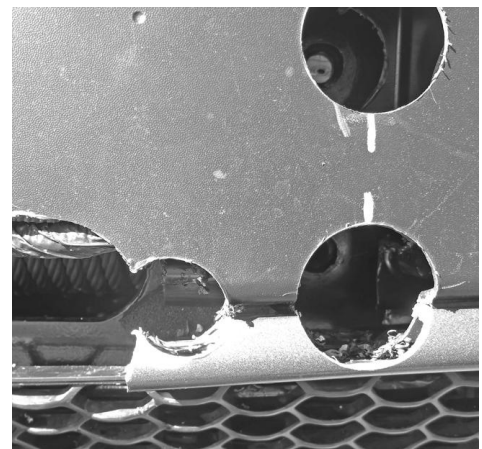


< Photo at left shows the oval and spacer tube mounting holes drilled and cut.

Note, the photo also shows the control box mounting for 4cyl Jeeps only. 6cyl Jeeps will be mounting the control box onto the bumper itself.



We recommend one more cut with the holesaw which is going to be useful when you are putting your fairlead on. It will make space for the nuts on the inside of your new steel bumper. Notice in the photo at right, the hole which is just to the outside of your large oval.

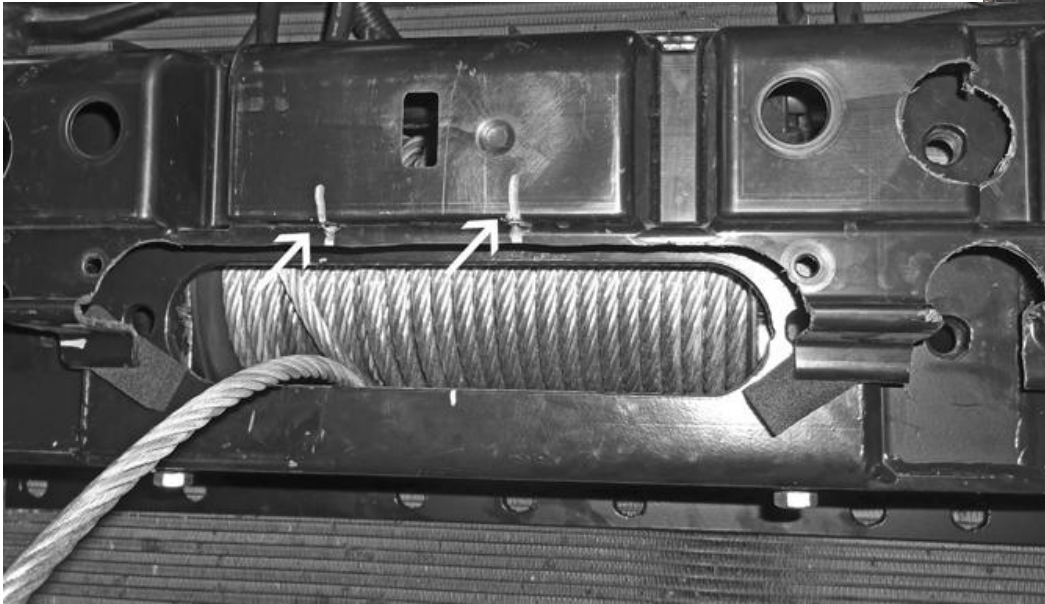




Step 17: With all the cutting and drilling complete, time now to put everything back together. We recommend starting with the radiator shroud pieces on each side of the engine compartment.

The photo at left shows the shroud end mounted by sliding the notch in at the top. Note that you will need to cut the bottom of the end shroud to fit over the new crossmember. Trim it to size and install. Then we recommend using a zip tie such as is shown in the photo with the fingers holding the end to secure the lower portion of the piece.

Photo at right shows the passenger's side shroud, cut to proper length, and also zip-tied on the lower portion to hold in place.



< Step 18: Remount the foglight wire support member. You already cut this piece in step 15. Attach using the original screws, and remember the 2 under the inside of the headlights. Along the front of that cross-piece, you will notice a channel with holes, the fog light wiring will reattach there. Notice the middle holes are gone from having cut the cable opening. We recommend to

drill 2 new holes to match the plastic snaps on the harness, above your cut point, just on the underside of that center bulge and indicated by the white arrows in the photo above. Notice also on the lower outside corners of the cable opening, the 2 foam pads placed on the winch mount, under the plastic cross-piece. We recommend to attach the provided foam block at this time which will help eliminate any rattling noises from this lower assembly. Finally, you will notice you will have to make a cut for the winch clutch lever to be able to turn.

Step 19: Now it is time to re-install the actual bumper. It is best to have a helper do this since the plastic is large and cumbersome. Best to first hold the bumper close to position and reattach the fog light wiring. Start in the middle with your 2 new holes, then work your way out on each side with the final snaps being on the side of the cross-piece.

For the bumper itself, simply reverse your removal process making sure all of the plastic snaps are secure along the body, and those slide-locks on the unders-side of the fog light cross piece. When the bumper is installed. Go ahead and remount the forward fender pieces with all of the screws and white snap-locks. Then finally the top radiator shroud with the push-pin locks. With the bumper and essentially entire front end reassembled, it is now time to mount the bumper, and for 6cyl Jeep... the external winch control box.

Step 20: Fairlead installation. Your winch comes with roller, but you can also purchase the Howse style fairlead as well. We find it helpful to install the fairlead to the steel bumper before mounting to the vehicle. Bolt the fairlead to the opening with proper orientation to proceed.



Step 21: Install Bumper/Brush Bar kit. Use the 4 - 4½" bolts to mount the bumper kits. If you have not already, slide your winch cable out of the winch a couple feet, pull it thru the winch opening on the steel bumper. Slide each bolt thru a washer, thru the steel bumper, then thru the large sleeve. Do all four and then you're ready to place the steel bumper over the stock plastic one.

< Photo at left shows the bolts and sleeves, bumper is ready to mount.

Slide steel bumper into place and screw in all 4 bolts a couple threads before using a wrench for final tightening... do NOT tighten at this time. Wait until AFTER your control box is installed (6cyl

only, 4cyl Jeeps can tighten fully at this time).

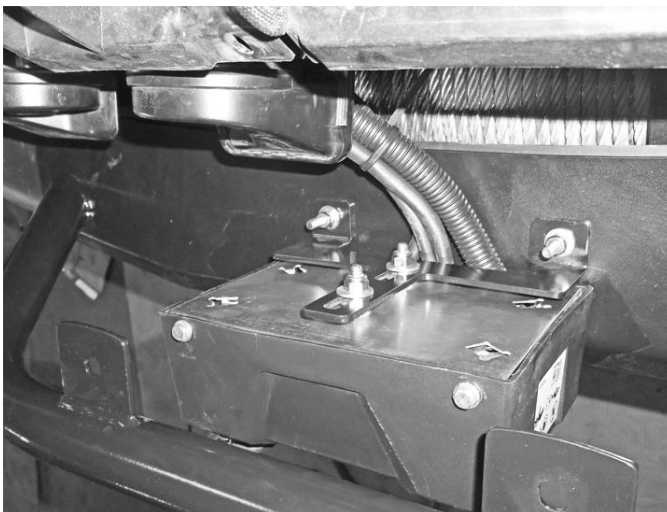
Remember if you have the Brush Bar and Bumper, the bolts will pass thru both before mounting to your Jeep. The whole assembly will go on at one time.

4CYL JEEPS... You are done! The picture at right shows the finished 4cyl winch and control box mounting setup >



Step 22: Control box modification and installation for 6cyl Jeeps.

Hold your control box in place and you will notice the wires are all up on top. You need to flip the plastic cover over so the Logo reads correct, and the wires are on the bottom. Remove 3 small bolts holding plastic cover. Turn 180* to mark and drill new holes. You will be using 4 bolts now, 2 on top, 2 on bottom. Use ¼" drill bit for those holes. Use existing and new U-clips for the small bolts on the metal backing plate. Control box modification is complete when you have installed and tightened all 4 bolts.



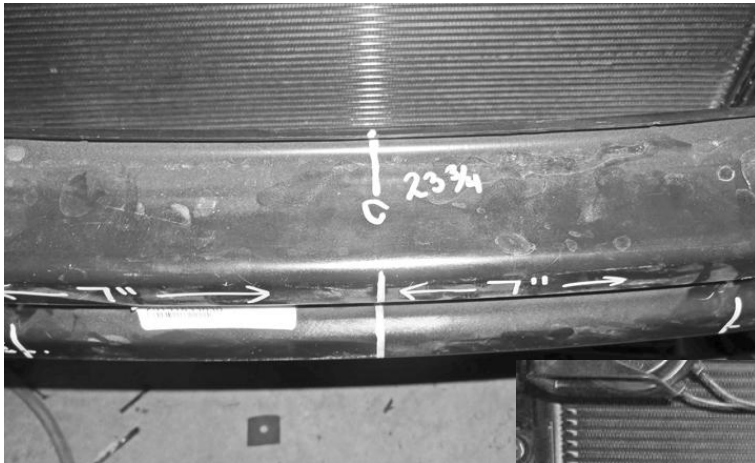
Step 21: Now to mount the control box. First, connect the wires as per the winch install instructions. Now you may tighten the 4 large bumper bolts. Take care not to let your control box scratch your new bumper.

You will see existing holes in your bumper. Drill thru those the plastic bumper so that you can install the control box mount with the new ¼" bolts. The plastic on the inside will be uneven, fyi. We recommend inserting the bolts up from the inside as the plastic will compress when tightened (just makes this step easier we feel). The fit can be tight pushing those bolts up from below, unspooling your winch cable some can create some more space if needed.

< Photo at left shows the control box bracket as seen from above mounted to the steel bumper, and the control box also properly mounted with extra nuts from your winch kit.

That pretty much covers it. Check and make sure everything is tightened properly and make sure to read winch operation instructions for safety. Email our store if you have any questions regarding this installation. ENJOY!!!

FOR WINCH-LESS (WL) BUMPER MOUNT FOLLOW STEPS 1 THRU 11, THEN...



STEP 11 (WL).

Once you have the fascia that holds the fog light wiring removed, find the center of the crossmember.

As shown in the photo at left, this should be about 23.75" from each side to the center.

Next, measure about 7" from the center on each side and make marks as shown in the photo at right.

From there, measure down 1 1/8" from the top, mark it, then center punch that mark.

From that point, measure down 3 1/8" from the top and center punch that point.

The top hole will be a little difficult to drill as it is on the bend of the crossmember. You will be drilling 1/2" holes here for the mounting bolts. The mounting bolts for the bumper kit will pass all of the way thru these holes

STEP 12 (WL).

Place the plastic fascia that has the wiring for the fog lights in place and trim for clearance of mounting points. Be careful not to damage wiring.

TIP: For this step, refer back to the winch mounted instructions above. You will be cutting/trimming out the same 4 mounting holes, only you are going to SKIP the large oval winch opening.

Place bumper back into position and mark the inside of the bumper with a marker so you can drill the holes for the bumper mount.

PLEASE NOTE: When you mount the bumper, you will use the 'retainer brackets' on the inside of the crossmember. These help spread the load so when the bolts are tightened, the metal retains integrity... kind of like a large washer for the back.

If you have difficulty seeing the photos in your print instructions due to copier printing, please email our store from our website and we can reply with a digital copy of these instructions which may allow you to view photos more clearly.
Use your common sense as much (or more) than these instructions for the ideal installation of your Cherokee bumper kits. ENJOY!

